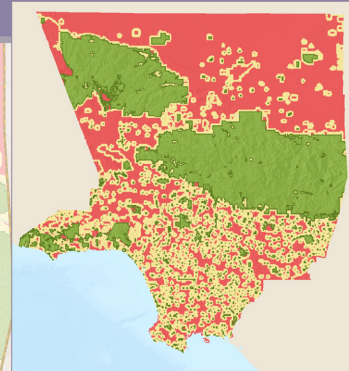
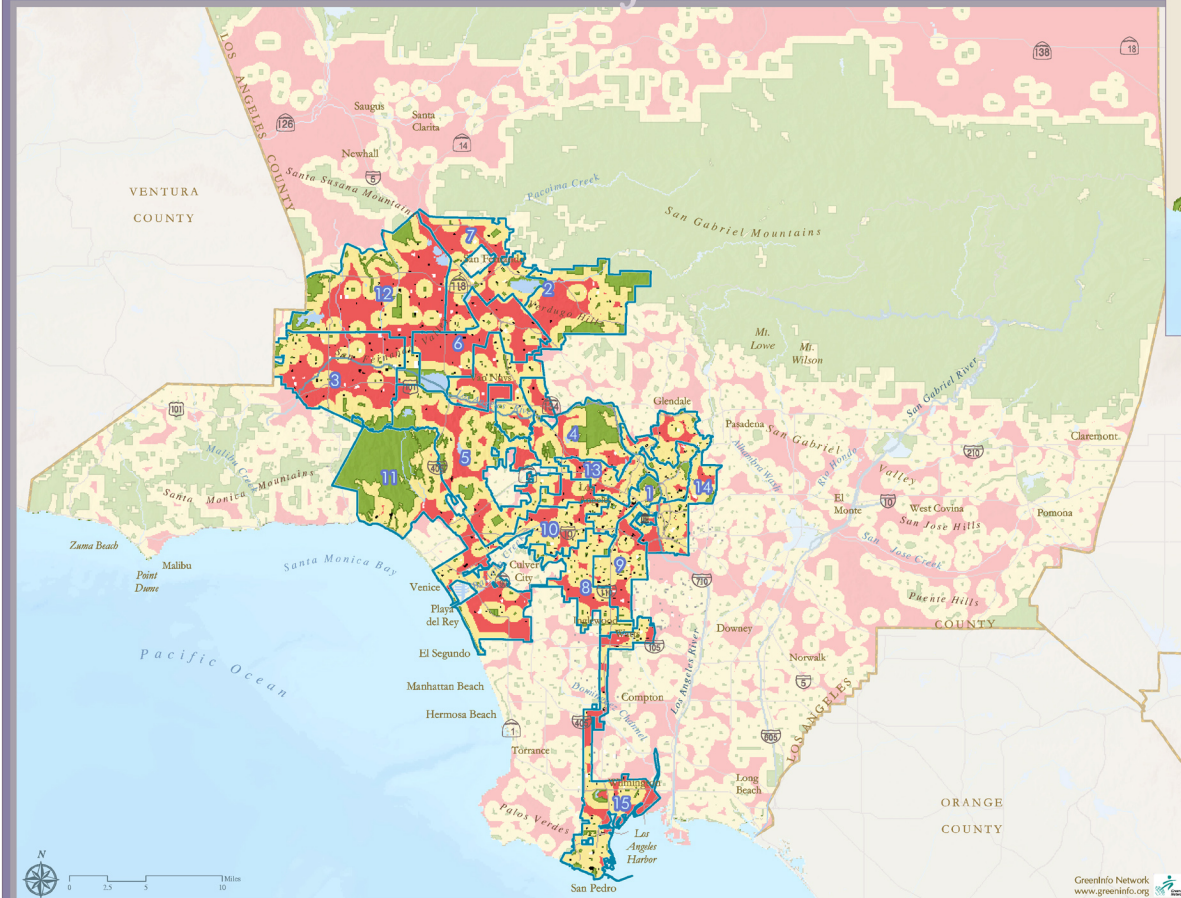


Park Access and Schools in Los Angeles



City Council District

- | | |
|----------------------|--------------------------|
| 1 - Ed P. Reyes | 9 - Jan Perry |
| 2 - Wendy Gruel | 10 - Herb I. Wesson, Jr. |
| 3 - Dennis P. Zine | 11 - Bill Rosendahl |
| 4 - Tom LaBonge | 12 - Greg Smith |
| 5 - Jack Weiss | 13 - Eric Garcetti |
| 6 - Tony Cardenas | 14 - José Huizar |
| 7 - Alex Padilla | 15 - Janice Hahn |
| 8 - Bernard C. Parks | |



- Existing Park/Green Space
- Within a half mile of a Park
- Over a half mile from a Park

LAUSD Schools:*

- Less Than 5 Acres of Playground Space
- 5 or More Acres of Playground Space

*LAUSD data is estimated and not to be considered accurate for all purposes.

Green Access Mapping is a project of The City Project at the Center for Law in the Public Interest.
www.clipi.org, © 2006, using 2000 census data and GIS mapping tools.
 J. Eric Lovell and Prof. Leo Estrada of UCLA prepared the park space data set.